



Premium & elegant

∞ QUADPACK

Helen bottle



Product Description

Experience a touch of elegance with the Helen bottle. Its crystal clear transparency showcases vibrant shades while the premium quality design keeps the formula protected and stylish. Made from PET and up to 50% rPET, this luxurious lip gloss comes in a 4ml size with three versatile applicators.

Technical Features

- Round shape and thick wall
- Cap, rod, bottle in PET, up to 50% rPET
- 3 applicators available
- OF capacity: 5.5ml
- Suggested filling weight: 4ml



The Stylish Helen: 52001818 / 52001821
 The Comfy Helen: 52001822 / 52001819
 The Trendy Helen: 52001832 / 52001830



Crystal clear transparency

Premium & elegant

The Comfy

One size: **QPS028L**

Product Description

The Comfy applicator ensures accurate application with its slender, pointed end and flexible body. Its rounded tip provides comfort and control, while the flexibility allows for precise application along the contours of the lips. With a wide central reservoir area, it is perfect for lip glosses or lip oil formulas. The soft and flexible design easily glides the formula onto the desired areas, resulting in a seamless and effortless application experience.

Key aspects

Soft and flexible ensuring an even distribution of the formula on the desired area. It provides a smooth and consistent application.

Way of application

Use the tip to outline and fill your lips with the reservoir at the center. Spread and distribute the formula evenly thanks to its soft and flexible body.

Formula combination

- Lip gloss
- Lip oil
- Liquid blush
- Highlighter

Technical specifications

- Material: TPEE
- Dimension: Ø5.5 x length 12mm
- Size: S
- Status: Industrial

Pack options

- Bottle: suitable for Helen
- Rod: Ø4.5mm / Wiper: Ø4.35mm



∞ QUADPACK

**Flexible
& soft**
**Wide
reservoir
area**

**Smooth &
consistent
application**



Premium & elegant

The Stylish

One size: **QPS027F**

Product Description

Experience high control and precision with the Stylish applicator, featuring a small doe-foot design. With its small reservoir tip, it stores the perfect amount of formula for mess-free results. Whether paired with face formulas like concealer or liquid blushes, or used with lip formulas that demand precision and control, such as liquid lipsticks, the Stylish applicator delivers flawless application every time.

Key aspects

Doe-foot shaped applicator designed to provide maximum control. Its compact and firm design ensures precise and effortless application.

Way of application

Use the reservoir tip to create small dots filled with the formula on your face or lip lines and blend it for a flawless finish.

Formula combination

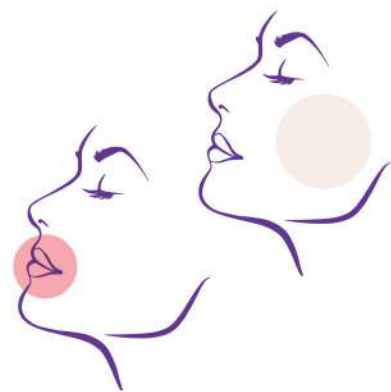
- Concealer
- Liquid blush
- Highlighter
- Liquid lipsticks

Technical specifications

- Material: TPEE
- Dimension: Ø5 x length 12mm
- Size: S
- Status: Industrial

Pack options

- Bottle: suitable for Helen
- Rod: Ø4.5mm / Wiper: Ø4.35mm



∞ QUADPACK

Small
doe-foot
applicator

Firm &
precise

Rigid tip
for more
control

Premium & elegant

The Trendy

One size: **QPS029L**

Product Description

The Trendy applicator offers precise application, even product distribution, and enhanced control for different coverage needs. Its doe-foot shape allows for more formula in the central reservoir area, while the rounded tip provides a gentle and soft touch, enabling precise application for sharp and defined looks. With its medium rigidity, it is perfect for face formulas like concealers and works well with liquid lipsticks or lip gloss.

Key aspects

Doe-foot applicator with a large central reservoir to store more formula. It offers a precise application experience, thanks to its soft yet rigid texture and rounded gentle tip.

Way of application

Use the reservoir on the tip to create dots filled with formula. Then, flip the applicator and simply spread it on your desired area.

Formula combination

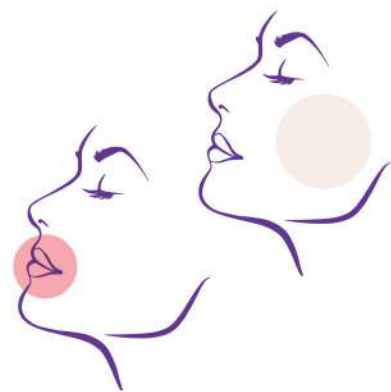
- Concealer
- Liquid blush
- Highlighter
- Lip gloss
- Liquid lipsticks

Technical specifications

- Material: TPEE
- Dimension: Ø5.5 x length 12.5mm
- Size: S
- Status: Industrial

Pack options

- Bottle: suitable for Helen
- Rod: Ø4.5mm / Wiper: Ø4.35mm



∞ QUADPACK

**Doe-foot
applicator**

**Central
reservoir**



**Precise
application &
enhanced
control**